

INCA ONSET S20

High speed digital flatbed press

SERICOL
More than ink...Solutions.
FUJIFILM



Onset S20



the latest innovation in the Onset Series,
the world's fastest flatbed presses

The Inca Onset S20 brings another innovation to the market, drawing on the features that have made the original Onset the quality and speed benchmark in wide format digital inkjet printing for the POP market.

Filling the gap between the Spyder Series and the Onset S70, there are high expectations for the S20 which incorporates many of Inca's standard features as well as a number of new, innovative features for easy operation.

With a full bed print array, the Onset S20 boasts print speeds of over 3,600 ft²/hr or throughput of 68 beds an hour viewable at normal POP viewing distances and with substrates as thick as 2 inches.

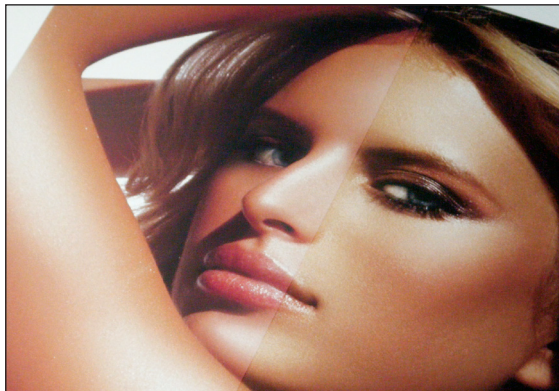
In addition to CMYK configuration, the S20 offers a choice of white, or light cyan and light magenta. The ability to vary the gloss level gives the user flexibility to set the desired gloss level on a per job basis directly from the operator console.

Inca Onset S20 Features:

- Throughput of 68 full beds an hour
- Full Bed Print Array
- Double sided printing in precise registration
- Expanded Color Options:
 - Light Cyan & Light Magenta
 - White
- New variable gloss levels from Satin to Gloss
- New Automation options

UVIJET INK

The FUJIFILM Sericol Uvijet family of inks offers excellent adhesion and flexibility. Uvijet inks have been developed for a wide range of media. Ideal for both indoor and outdoor applications including banners, POP, backlit images, exhibition graphics, signage, printing onto glass, metal, acrylic and board for example. These inks have been specifically formulated to maximize production output and provide a wide color gamut coupled with bright colors.



The Onset S20 allows the user to alter the finish of the Uvijet ink at varying levels from a satin to gloss as shown above.

Inca Onset S20

ONSET S20

The Onset S20 four color offers fast and accurate printing that produces a print quality ideal for a wide range of point of sale and graphic display applications. The S20 delivers smooth tones as well as sharp lines and text. This, combined with a gloss or satin finish, provides prints that are stunning in both their quality and the speed in which they are produced.

S20 SIX COLOR

Onset S20 six color gives the operator the ability to enhance print quality by adding light cyan and light magenta configuration. This, coupled with Inca's use of small drop print heads, means smoother color transitions which minimize the graininess of light colors and produce smoother skin tones. It offers customers the ideal solution for point of sale advertising material with closer viewing distances for high value products such as cosmetics or jewelry.

ONSET S20-WHITE

Onset S20 with white offers customers the opportunity to print a white layer under or over the CMYK content, using automatic print modes selected at the RIP. White can also be used as a spot color as part of the image. The excellent precision of the S20 makes it possible to overprint or underprint white with confidence in the finished product quality. In addition, multiple layers can be used to vary opacity. Onset S20 with white is ideally suited for printing direct to rigid substrates for shorter run high value backlit work onto glass and plastics, including lenticular signage or printing onto non-white materials such as metals, boards and colored display materials.

OPTIONAL 3/4 AUTOMATION SYSTEM

The optional 3/4 automation system increases the throughput of the S20 by 35-70% by minimizing handling time up to 20-45 seconds manually down to 9 seconds with automation. As a result, the S20 can produce up to 68 beds per hour with automation as opposed to up to 40 beds per hour with a manual system (45 seconds handling). The pre-load tables assists in the loading process by allowing the operator to place and register the sheet(s) on a pre-load table and the system auto loads to the print bed. The table is equipped with 3 registration points for 1-up full bed sheets or 3-up 40"x60" sheets. The unload process is fully automated from print bed to finished stack and includes a scissor lift which can be recessed in floor for floor height pallet removal process.

SPECIFICATIONS:

Print Area

- 123" x 63"
(edge to edge printing)

Print Finish

- Variable, Satin to Gloss

Max. Substrate Thickness

- 2"

RIP

- ColorGATE Production Server (Fujifilm or Inca Edition), Version 6.2 or later
- Wasatch SoftRIP® v6.7 or higher

Sericol Uvijet UV Inks

- OB - series UV curable inks (CMYK + Light cyan and magenta or white)

Space Required

- 23.6' (W) x 42.6' (L)

Power

- 3 Phase at 150 Amp

Factory Air requirement

- 90 PSI (6 bar)

Network

- 1000 Base-T

* Product specifications are subject to change without notice.

Print Modes and Throughput

	Auto	Manual*
	Beds per Hr.	Beds per Hr.
12 pass Bi-di Satin • Gloss	68 • 61	41 • 38
12 pass Uni Satin • Gloss	47 • 44	32 • 31
16 pass Bi-di Satin • Gloss	56 • 52	36 • 35
16 pass Uni Satin • Gloss	39 • 37	28 • 27
26 pass Bi-di Satin • Gloss	38 • 36	28 • 27
26 pass Uni Satin • Gloss	25 • 24	20 • 20

* Handling time is calculated at 45 seconds

Print Speed

	Auto	Manual
	ft ² per hour	ft ² per hour
12 pass Bi-di Satin • Gloss	3,600 • 3,283	2,201 • 2,061
12 pass Uni Satin • Gloss	2,549 • 2,392	1,745 • 1,670
16 pass Bi-di Satin • Gloss	3,027 • 2,808	1,957 • 1,863
16 pass Uni Satin • Gloss	2,083 • 1,977	1,513 • 1,457
26 pass Bi-di Satin • Gloss	2,039 • 1,957	1,490 • 1,446
26 pass Uni Satin • Gloss	1,355 • 1,309	1,088 • 1,059